



Xcluder® Pest Control Astragal Door Seals

Rodent Proof Seals for IPM and Commercial Applications

**Ideal for: Restaurants • Food Processing Facilities
Hotels / Motels • Schools • Food Distribution
Centers • Grocery Stores • Pet Stores •
Supercenters • Any location that requires reduced or
eliminated chemical pest control**

Doors are one of the most common entry points for mice, rats and other pests. And although they make for a beautiful entrance, the soft seals, gaps and/or openings between pairs of entry doors can provide little resistance to rats and mice.

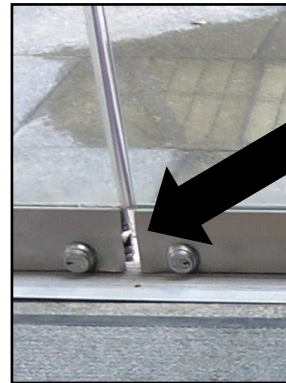
Xcluder® Pest Control Astragal Door Seals feature our patented Xcluder® fill fabric which provides a barrier that is virtually impenetrable to rodents and other pests. The reinforced EPDM rubber also provides a durable weatherseal that can pay for itself in the energy savings alone.

Xcluder® Pest Control Door Seals are easy to install and fit most common door sizes and types.

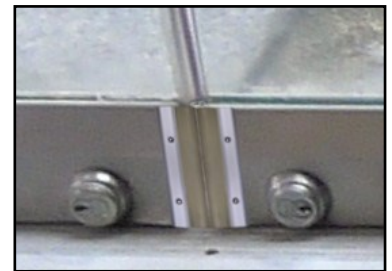
Custom lengths are also available. Contact us for more information and ordering.

Xcluder® Commercial Astragal Door Seal— Seals the gap between double doors, or a single door and the door frame

* Enlarged to show detail



Xcluder Threshold Gap Seal - Often times double swing glass doors meet but then leave a gap at the threshold where pests can enter. Below is an installation using two Xcluder Threshold Gap Seals. No more gap!



Application Options

Vertical Door Seal— Adhesive Application

- ◆ Can be cut to accommodate handles and locks
- ◆ Can be easily trimmed to accommodate handles
- ◆ Applies to door with durable weather resistant pressure attached adhesive strip
- ◆ Seal is made with heavy duty reinforced EPDM rubber gasket and Xcluder core
- ◆ Choice of white or black rubber

Vertical Door Seal— Hardware Application

- ◆ Can be cut to accommodate handles and locks
- ◆ Can be easily trimmed to accommodate handles
- ◆ 3/4" stainless steel sheet metal screws included
- ◆ Heavy duty reinforced EPDM rubber gasket and Xcluder core
- ◆ Choice of white or black rubber

Threshold Gap Seal

- ◆ Designed for double-swing doors where there is a gap at the threshold.
- ◆ Sturdy aluminum retainer and rubber gasket
- ◆ Choice of white or black rubber
- ◆ Offered in 6" lengths, can be easily trimmed to accommodate shorter lengths
- ◆ 3/4" stainless steel sheet metal screws included



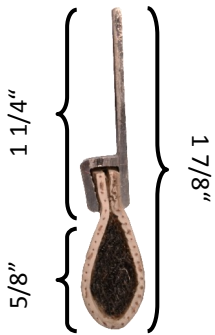
Xcluder® Pest Control Astragal Door Seals - Product Options

All Seals Feature

- ◆ Sturdy aluminum retainer in aluminum or bronze
- ◆ Choice of Black or White Rubber Gasket
- ◆ Xcluder® core
- ◆ Suitable for glass, wood and metal doors

Astragal Vertical Seals

Adhesive Application



- ◆ Heavy Duty, reinforced EPDM rubber gasket
- ◆ High density, double laminated Xcluder® core for maximum protection
- ◆ Suitable for door gaps up to 1/2"
- ◆ Applies to door with durable weather resistant pressure attached adhesive strip
- ◆ Can be cut to accommodate handles and locks

Item	Length	Color
162900	96"	Aluminum Retainer w/White rubber
162901	96"	Aluminum Retainer w/Black rubber
162902	96"	Bronze Retainer w/Black rubber

Hardware Application



- ◆ Standard rubber gasket with Xcluder® core
- ◆ Can be cut to accommodate handles and locks
- ◆ Suitable for door gaps up to 1/2"
- ◆ 6 x 3/4" stainless steel sheet metal screws included

Item	Length	Color
162903	96"	Aluminum Retainer w/White rubber
162904	96"	Aluminum Retainer w/Black rubber
162905	96"	Bronze Retainer w/Black rubber

Glass Door Threshold Astragal Gap Seals



- ◆ Height: 6"
- ◆ Standard rubber gasket with Xcluder® core
- ◆ Suitable for door gaps up to 1/2"
- ◆ Can be trimmed to accommodate shorter lengths
- ◆ 2 x 3/4" stainless steel sheet metal screws included

Item	Length	Color
162906	6"	Aluminum Retainer w/White rubber
162907	6"	Aluminum Retainer w/Black rubber
162908	6"	Bronze Retainer w/Black rubber