



Xcluder® Pest Control Astragal (Vertical) Door Seals

Rodent Proof Seals for IPM and Commercial Applications

Designed for Entry Doors

Doors are one of the most common entry points for mice, rats, and other pests, and gaps between pairs of entry doors can provide little resistance to rats and mice.

Xcluder Pest Control Astragal Door Seals feature our patented Xcluder fill fabric which provides a barrier that is virtually impenetrable to rodents and other pests. The reinforced EPDM rubber also provides a durable weatherseal that can pay for itself in the energy savings alone.

Xcluder Pest Control Door Seals are easy to install and fit most common door sizes and types.

Contact us for more information and ordering.



Xcluder® Commercial Astragal Door Seal—
Seals the gap between double doors, or a single door and the door frame

* Enlarged to show detail

PRODUCT OPTIONS

Astragal Single Door Seals:

- ◆ Sturdy 96" retainer (aluminum or bronze) that can be trimmed/cut to accommodate handles, locks, and/or shorter doors
- ◆ Works on glass, wood, and metal doors
- ◆ Seals door gaps up to 1/2"
- ◆ Black or Gray reinforced EPDM rubber gasket which is filled with the Xcluder® rodent proof fabric core
- ◆ Available in a choice of adhesive or hardware application

Astragal Single Seal with Flap:

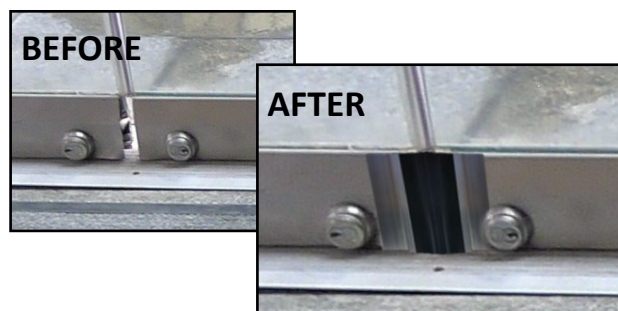
- ◆ All the same features as the single Astragal Seal **plus** an additional rubber flap for an added weather and light barrier.

Astragal Seal Kits:

- ◆ The kit includes two seals—one of the vertical single seal and one of the vertical single seal with "weather strip" flap.

Glass Door Threshold Astragal Gap Seals:

- ◆ Designed for double-swing doors where there is a gap at the threshold
- ◆ Made with heavy-duty reinforced EPDM rubber gasket and Xcluder core
- ◆ Applied to glass door with durable weather-resistant pressure attached adhesive strip
- ◆ Offered in 6" lengths, can be easily trimmed to accommodate shorter lengths
- ◆ Three color combinations

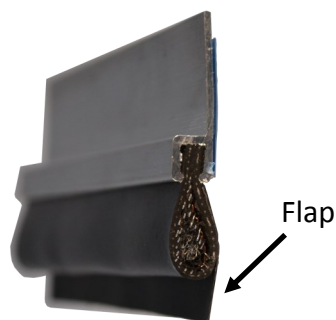
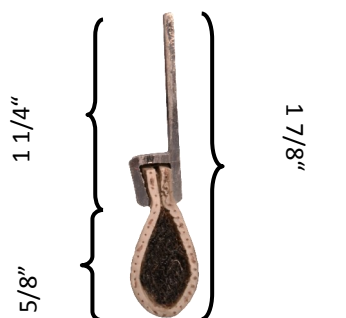
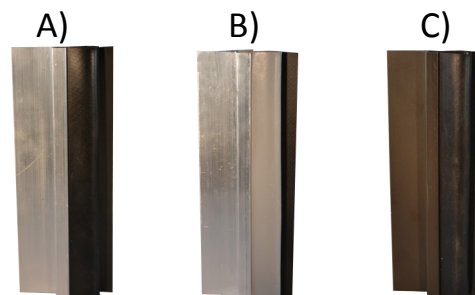




Xcluder® Pest Control Astragal (Vertical) Door Seals - Product Options

Vertical Door Seals are available three ways –

- Single Astragal Door Seal
- Single Astragal Door Seal with Flap
- Two Piece Astragal Door Seal Kits



Pictured is an end view of the aluminum retainer w/ black rubber w/ flap for an additional barrier against light and weather.

Step #1 - Choose Your Desired Installation Application	Step #2 - Choose the Seal that works best with your style of door	Step #3 - Choose from three retainer and rubber color combinations		
		A)Aluminum Retainer w/ Black rubber	B)Aluminum Retainer w/ Gray Rubber	C)Bronze Retainer w/ Black Rubber
Adhesive Application - Applies to door with durable weather resistant pressure attached adhesive strip	- Single Seal - Adhesive Application	162901	162910	162902
	- Single Seal w/ Flap - Adhesive Application	162901F	162910F	162902F
	- Two Piece Kit - Adhesive Application	162921	162930	162922
Hardware Application - Pre-drilled Holes and 6 x 3/4" stainless steel sheet metal screws included	- Single Seal - Hardware Application	162904	162911	162905
	- Single Seal w/ Flap - Hardware Application	162904F	162911F	162905F
	- Two Piece Kit - Hardware Application	162924	162931	162925

Glass Door Threshold Astragal Gap Seals



- ♦ Height: 6"
- ♦ Applies to door with durable weather resistant pressure attached adhesive strip

A) Aluminum Retainer W/ Black rubber	B) Aluminum Retainer W/ Gray Rubber	C) Bronze Retainer W/ Black Rubber
162907	162909	162908